

The following activities take place regularly in the hall, and are open to all comers

Badminton

Angela Sexon 01769 573883

Why Nots!

Carol Foster 01769 574439

Filleigh History Group

Norman Richards 01769 572683

Skittles

Angela Sexon 017695 573883

Whist Drive

Francis Nott 01769 550389

South Molton U3A

www.southmoltonu3a.co.uk/committee-contacts/

North Devon Beaders

Sheila Manning 01769 57872

Upholstery Classes

Darren Prendergast 01769 572670

Exmoor Quilters

Sandra Cunningham 01271 830043

Details of all other Hall events will appear in the Filleigh Flyer (a free quarterly information sheet delivered to each home in the parish), on the Hall noticeboard and posters distributed to business in the area. If you would like to receive, by email, a copy of the flyer please contact Tanya Hussell t.hussell.filleigh@btinternet.com or read it on our website.

Other contacts in our scattered Parish are:

Church Wardens

Norman Richards 01769 572683

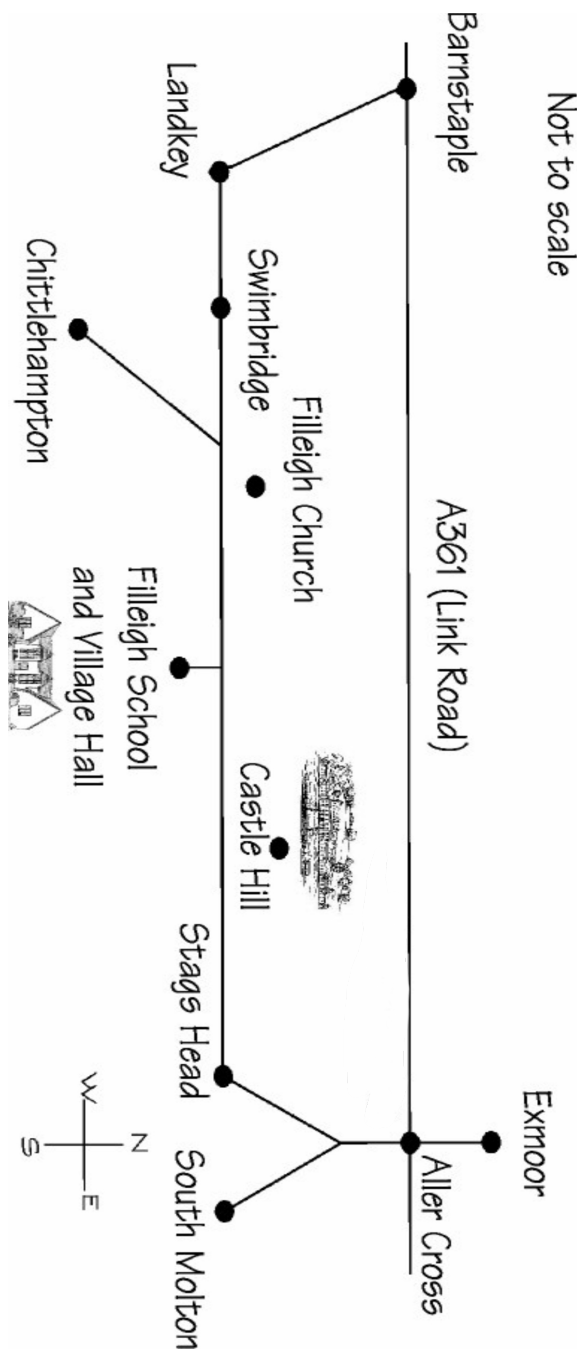
Angela Avens 01769 579254

Filleigh School

01598 760295

Parish Council

Gordon Hewill 01598 760377



The Flexible Venue for Your Functions

Conferences Dances

Family Celebrations

Meetings Concerts

Community Events

Businesses Workshops

Regular Bookings

www.filleighvillagehall.org.uk

To Hire or Enquire
t.hussell.filleigh@btinternet.com
Or 01598 760332

Filleigh Village Hall

Our Facilities

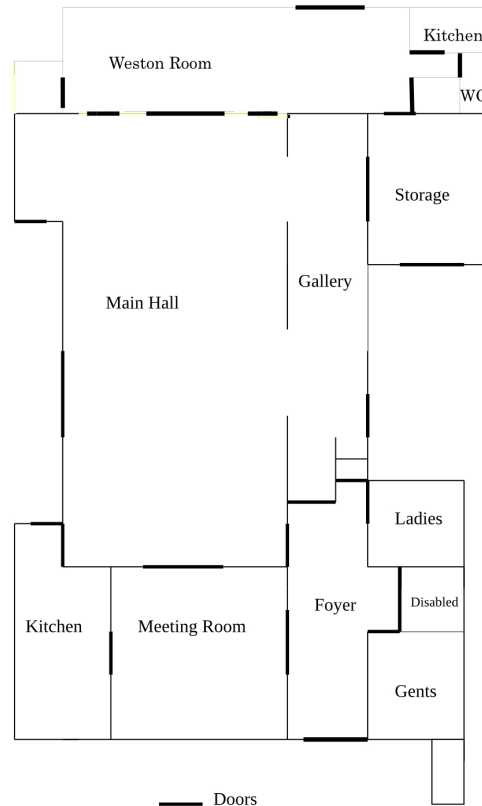
The hall is set in an easily accessible location in North Devon's lovely countryside, with plenty of good well lit parking. The pleasing landscaped site includes a leisure area adjacent to the main hall, with outdoor but covered seating.

The Foyer

A pleasant and welcoming entrance, with easy access to the toilets and both the main hall and meeting room.

The Main Hall

Spacious, light and airy with underfloor heating for the cooler days and patio doors for the warmer ones. Semi-sprung floor, suitable for dances, dinners, conferences and it even has a badminton court marked out. There is a flexible modular stage and blackout curtains. There is wheelchair access throughout.



The Weston Room

A fully contained room which can be used separately or with the main hall. It has a skittle alley and is a suitable space for meetings and training purposes where the main hall is too big. It has its own entrance, a small kitchen and unisex toilet.

The Meeting Room

A smaller room for the smaller groups, with large folding doors, which open onto the main hall and together with the Weston room make a very large space for the bigger weddings etc. There is a pull down screen for meetings or training days. The meeting room also has its own entrance, if needed.

The Kitchen

This is a large well planned kitchen again with separate access to the car park. There are plenty of work surfaces with large sinks and a commercial dishwasher. The kitchen has 3 cookers, again one commercial and 2 domestic size cookers, a microwave, separate fridge and freezer. There is china and cutlery for 200 people. Hatches and doors lead to both the main hall and meeting room.

The Gallery

An area running down one side of the main hall, accessed through archways and provides a pleasant 'sitting out' area with bar facilities if required. There is an access to the exterior as well.